

# 1 Bedroom • Type 1

1 BATHROOM



FLOOR PLAN

478 sq ft

44.4 sq m

LandrowPlace.co.uk

Landrow Place apartment layouts provide approximate measurements and are for illustrative purposes only. Dimensions are taken from the architects drawings and tolerances may occur with the as-built product, therefore floor plans should not be used for purchasing items such as furniture or carpets. Measurements are taken from the architects plans and are given to the nearest 15cm (or equivalent in inches) and have been taken from particular points within the room. Detailed plans are available for inspection at our marketing suite during normal working hours and customers may check their apartment type specification prior to entering into a reservation.

# 1 Bedroom • Type 2

1 BATHROOM



FLOOR PLAN

502 sq ft

46.6 sq m

LandrowPlace.co.uk

Landrow Place apartment layouts provide approximate measurements and are for illustrative purposes only. Dimensions are taken from the architects drawings and tolerances may occur with the as-built product, therefore floor plans should not be used for purchasing items such as furniture or carpets. Measurements are taken from the architects plans and are given to the nearest 15cm (or equivalent in inches) and have been taken from particular points within the room. Detailed plans are available for inspection at our marketing suite during normal working hours and customers may check their apartment type specification prior to entering into a reservation.

# 1 Bedroom • Type 3

1 BATHROOM



FLOOR PLAN

502 sq ft

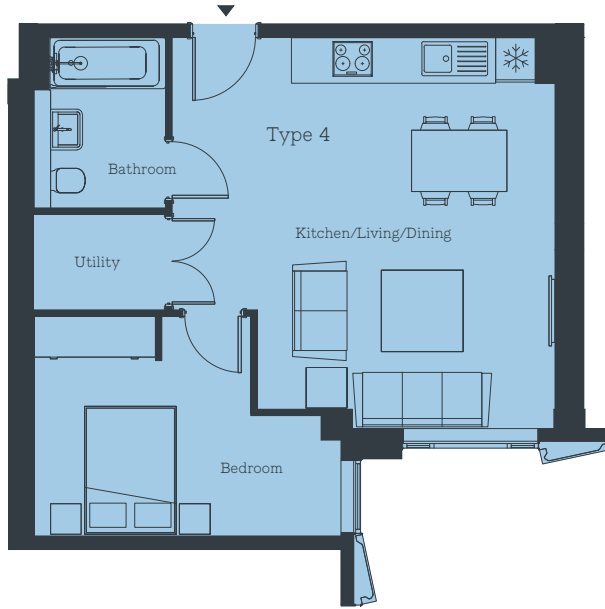
46.6 sq m

LandrowPlace.co.uk

Landrow Place apartment layouts provide approximate measurements and are for illustrative purposes only. Dimensions are taken from the architects drawings and tolerances may occur with the as-built product, therefore floor plans should not be used for purchasing items such as furniture or carpets. Measurements are taken from the architects plans and are given to the nearest 15cm (or equivalent in inches) and have been taken from particular points within the room. Detailed plans are available for inspection at our marketing suite during normal working hours and customers may check their apartment type specification prior to entering into a reservation.

# 1 Bedroom • Type 4

1 BATHROOM



FLOOR PLAN

549 sq ft

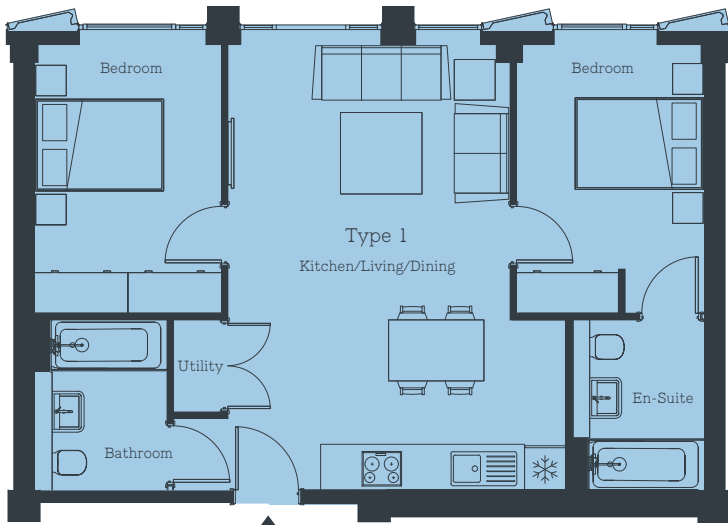
51.0 sq m

LandrowPlace.co.uk

Landrow Place apartment layouts provide approximate measurements and are for illustrative purposes only. Dimensions are taken from the architects drawings and tolerances may occur with the as-built product, therefore floor plans should not be used for purchasing items such as furniture or carpets. Measurements are taken from the architects plans and are given to the nearest 15cm (or equivalent in inches) and have been taken from particular points within the room. Detailed plans are available for inspection at our marketing suite during normal working hours and customers may check their apartment type specification prior to entering into a reservation.

# 2 Bedrooms • Type 1

2 BATHROOMS



FLOOR PLAN

696 sq ft

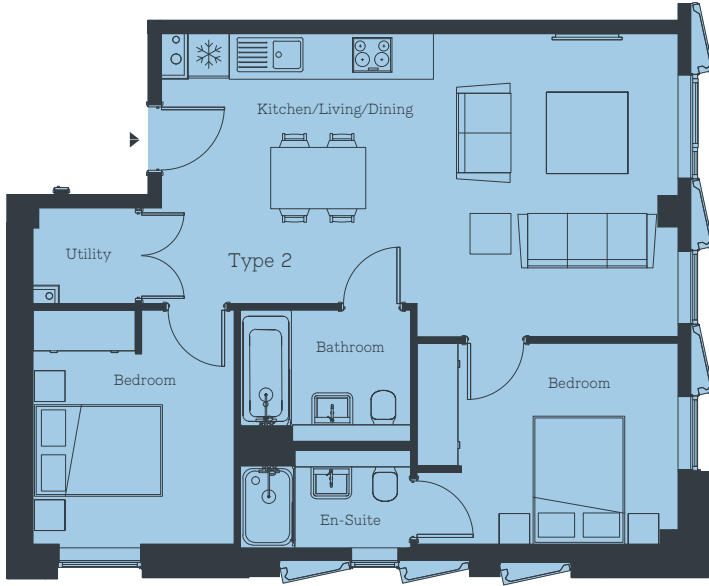
64.7 sq m

LandrowPlace.co.uk

Landrow Place apartment layouts provide approximate measurements and are for illustrative purposes only. Dimensions are taken from the architects drawings and tolerances may occur with the as-built product, therefore floor plans should not be used for purchasing items such as furniture or carpets. Measurements are taken from the architects plans and are given to the nearest 15cm (or equivalent in inches) and have been taken from particular points within the room. Detailed plans are available for inspection at our marketing suite during normal working hours and customers may check their apartment type specification prior to entering into a reservation.

# 2 Bedrooms • Type 2

2 BATHROOMS



FLOOR PLAN

712 sq ft

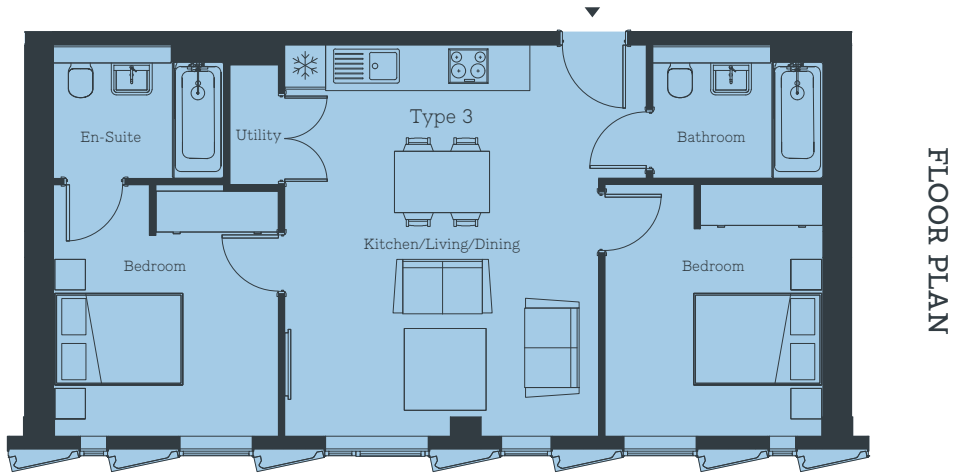
66.1 sq m

LandrowPlace.co.uk

Landrow Place apartment layouts provide approximate measurements and are for illustrative purposes only. Dimensions are taken from the architects drawings and tolerances may occur with the as-built product, therefore floor plans should not be used for purchasing items such as furniture or carpets. Measurements are taken from the architects plans and are given to the nearest 15cm (or equivalent in inches) and have been taken from particular points within the room. Detailed plans are available for inspection at our marketing suite during normal working hours and customers may check their apartment type specification prior to entering into a reservation.

# 2 Bedrooms • Type 3

2 BATHROOMS



701 sq ft

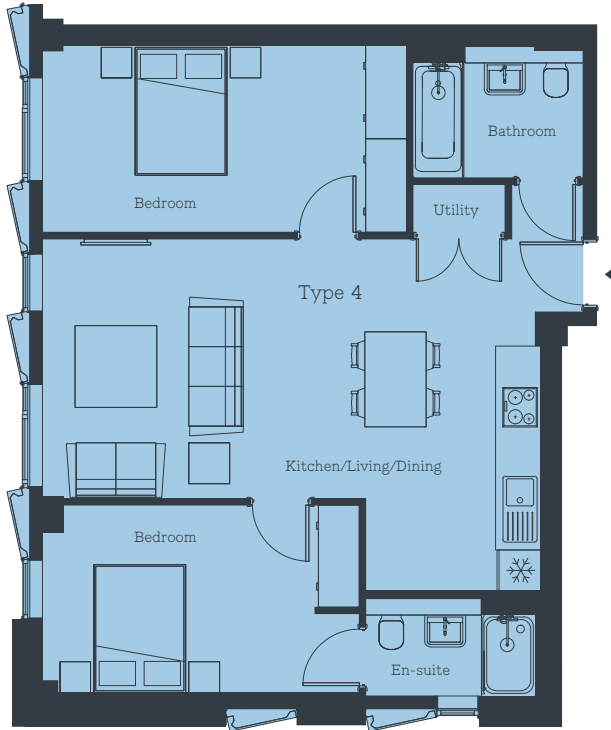
65.1 sq m

[LandrowPlace.co.uk](http://LandrowPlace.co.uk)

Landrow Place apartment layouts provide approximate measurements and are for illustrative purposes only. Dimensions are taken from the architects drawings and tolerances may occur with the as-built product, therefore floor plans should not be used for purchasing items such as furniture or carpets. Measurements are taken from the architects plans and are given to the nearest 15cm (or equivalent in inches) and have been taken from particular points within the room. Detailed plans are available for inspection at our marketing suite during normal working hours and customers may check their apartment type specification prior to entering into a reservation.

# 2 Bedrooms • Type 4

2 BATHROOMS



FLOOR PLAN

780 sq ft

72.5 sq m

LandrowPlace.co.uk

Landrow Place apartment layouts provide approximate measurements and are for illustrative purposes only. Dimensions are taken from the architects drawings and tolerances may occur with the as-built product, therefore floor plans should not be used for purchasing items such as furniture or carpets. Measurements are taken from the architects plans and are given to the nearest 15cm (or equivalent in inches) and have been taken from particular points within the room. Detailed plans are available for inspection at our marketing suite during normal working hours and customers may check their apartment type specification prior to entering into a reservation.



# 3 Bedrooms • Type 1

2 BATHROOMS



988 sq ft

91.8 sq m



FLOOR PLAN

Landrow Place apartment layouts provide approximate measurements and are for illustrative purposes only. Dimensions are taken from the architects drawings and tolerances may occur with the as-built product, therefore floor plans should not be used for purchasing items such as furniture or carpets. Measurements are taken from the architects plans and are given to the nearest 15cm (or equivalent in inches) and have been taken from particular points within the room. Detailed plans are available for inspection at our marketing suite during normal working hours and customers may check their apartment type specification prior to entering into a reservation.